



SOLAR RELAY

**INVERTER CONTROL
with ESY SUNHM**



Models:
HM6

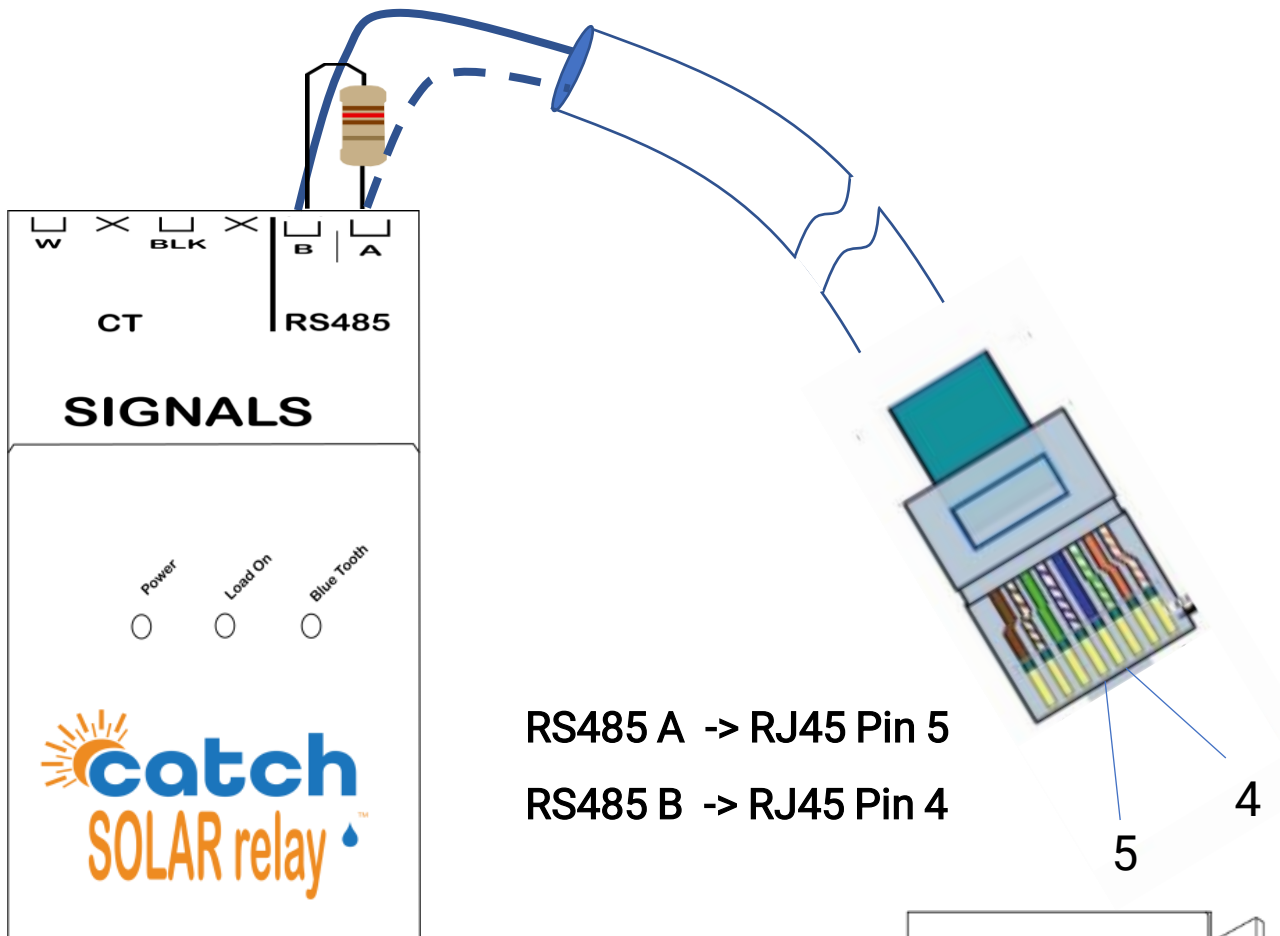
CATCH Power
A trademark of Project H Pty Ltd
180 Dumaresq Street
Glen Innes
NSW 2370
Australia
Ph: +64 2 5700 5717
W: www.Catchpower.com.au
E: sales@catchpower.com.au

IMPORTANT



This guide discusses the specific wiring and configuration need to implement inverter control. Ensure the installation guide for both products is also followed.

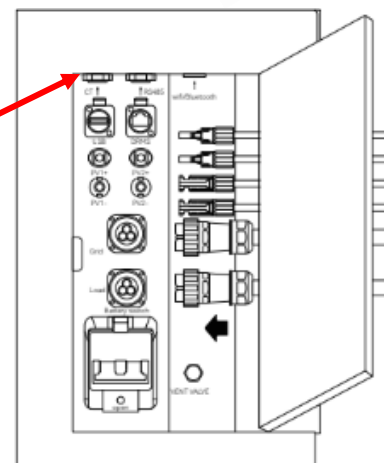
Wiring Instructions



Plug the RJ45 Connector into here

Ensure the data cable is rated for the voltages it will be in close proximity to.

A 120 Ohm terminating resistor may be required at the CATCH Relay terminals as shown in the diagram below if the cable run is longer than 10m.



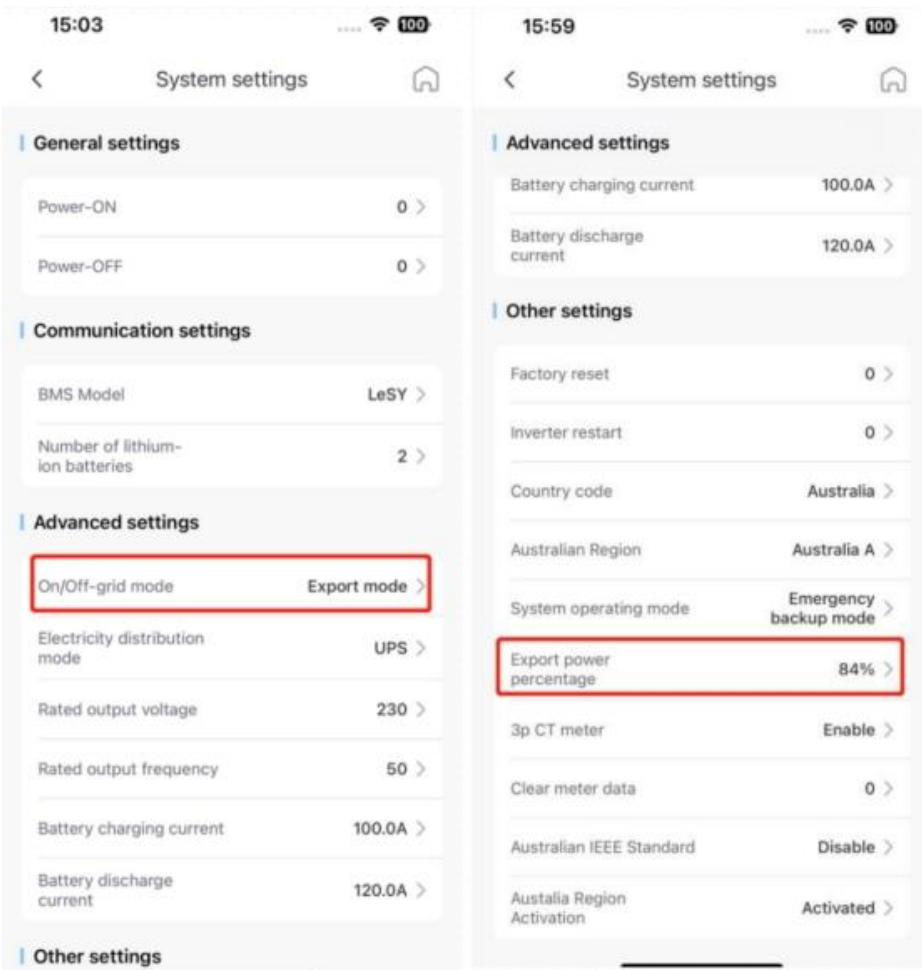
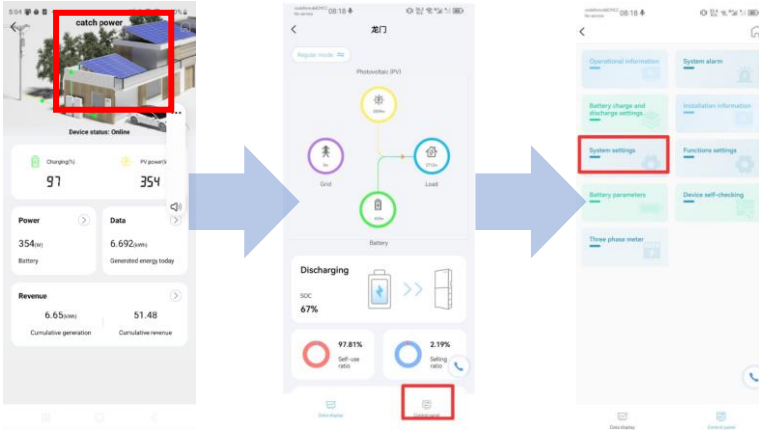
Inverter Setup

There are 2 apps. Make sure you are using the **+** app.

To set the desired site export limit following the screen flow below.



ESYSunHome+





FIRMWARE UPGRADE

Things change quickly.. And CATCH Power is no different. By upgrading the firmware on your CATCH Solar Relay, you ensure your device has all the bells and whistles.

SOLAR RELAY Setup

Navigate to the Configuration page, and under the Modbus configuration set the parameters as shown.

Modbus Configuration

Emulated Meter
ESYSUN HM6

Cluster Export Limit
0

Modbus Device ID
1

Modbus Baud Rate
9600

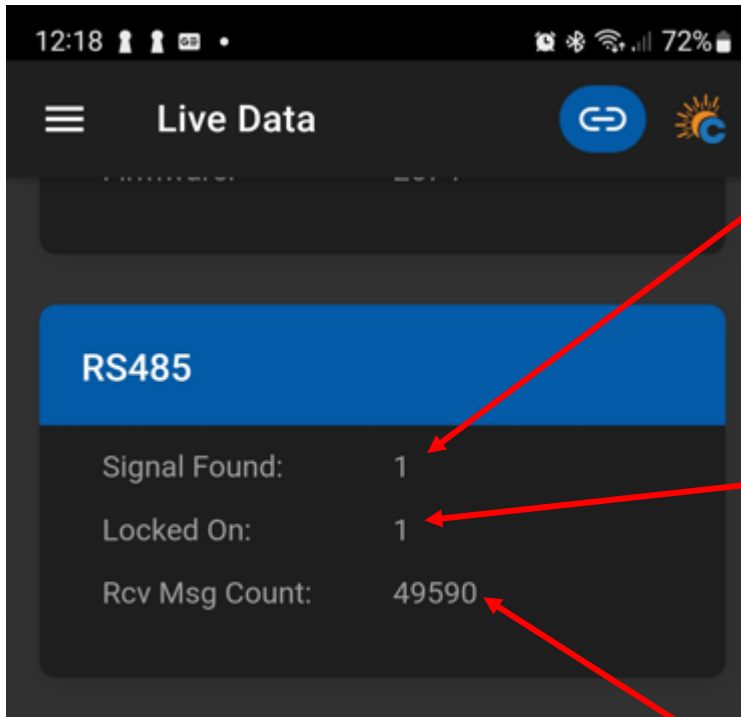
Modbus Stopbits
1

Modbus Parity
None

Checking the status of the RS485 interface

Within the CATCH Power app if you navigate to the bottom of the Live Data screen you will see something similar to the screen below.

The RS485 Status Can be used to confirm correct operation



Indicates the inverter is transmitting data on the RS485 cable.

If this is zero it means the inverter is not communicating or there is a break in the cable.

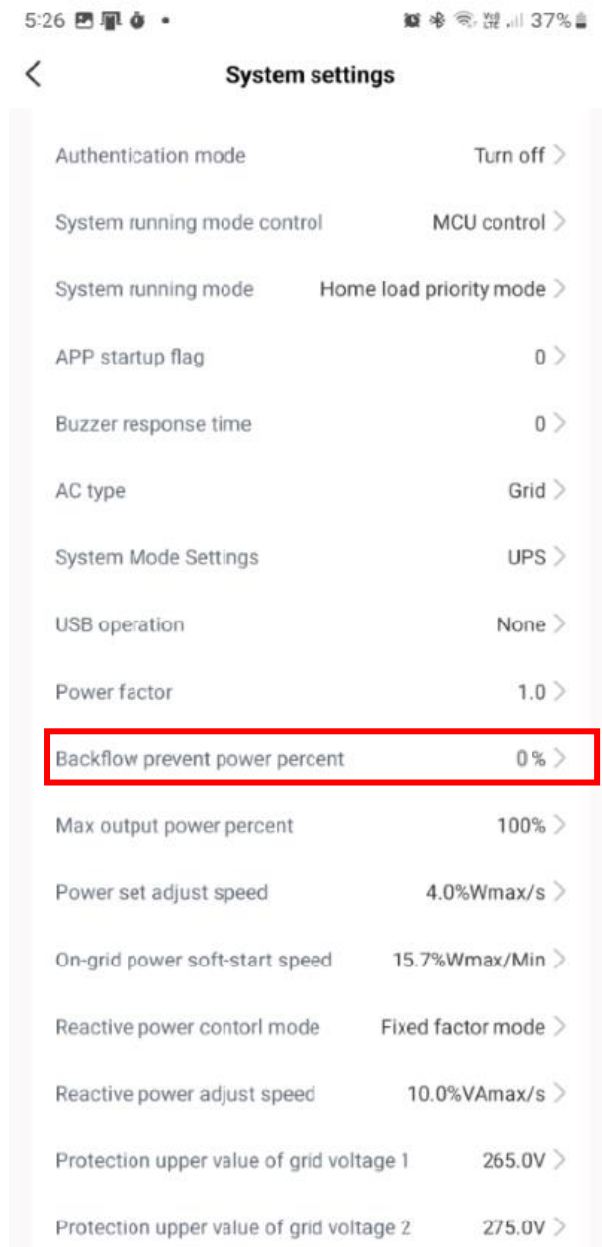
This indicates the inverter and the CATCH Relay are talking the same language.

If this is zero it is likely you have not chosen the correct meter when configuring the relay or the +ve and -ve wires are crossed over.

This number continually counts the number of successful messages. This number will continue to rise if communications the link is good.

**THE FOLLOWING ONLY NEEDS
TO BE FOLLOWED IF YOU ARE ENABLING
DYNAMIC / FLEXIBLE EXPORTS**

On Dynamic / Flexible export sites the export limit should be set to zero.





REGISTER SITE

DYNAMIC / FLEXIBLE Export Control

Follow the Configuration steps in the
Electricians Guide
to register the site for the MONOCLE, and for
Dynamic / Flexible Exports

DYNAMIC / FLEXIBLE EXPORT CONTROL

DYNAMIC / FLEXIBLE EXPORT CONTROL